

Giada SDM-Z8350

Intel® SDM-S Atom Player



Features

- ◆ Intel® Cherry Trail Atom Z8350 Processors
- ◆ Onboard 2GB DDR3L Memory
- ◆ eMMC Onboard 32GB
- ◆ SDM Standard I/O (1 x HDMI, 1 x DP, 1 x USB3.0, 1 x COM)
- ◆ 2 x USB2.0
- ◆ 1 x RJ45, Onboard WiFi/BT

Core System

CPU	Intel® Atom x5-Z8350
Frequency	1.44 GHz (Up to 1.92 GHz)
BIOS	AMI Source Code
Chipset	SOC
System Memory	DDR3L 1600MHz, Onboard 2 GB
GPU	Intel® HD Graphics 400
Graphic Engine	DirectX11, OpenGL4.0 and OpenCL 1.2
Network Controller	Realtek RTL8111F Gigabit Ethernet
WiFi+BT on Board	RL-SM02BD-8723BS for WiFi+BT
Storage	eMMC Onboard 32GB
JAHG (Patented Tech)	WatchDog Timer, Auto Power On, RTC

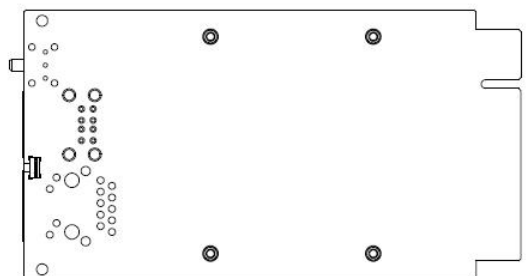
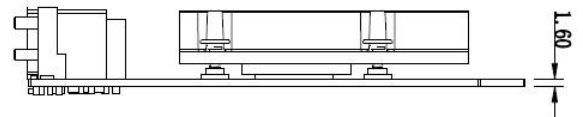
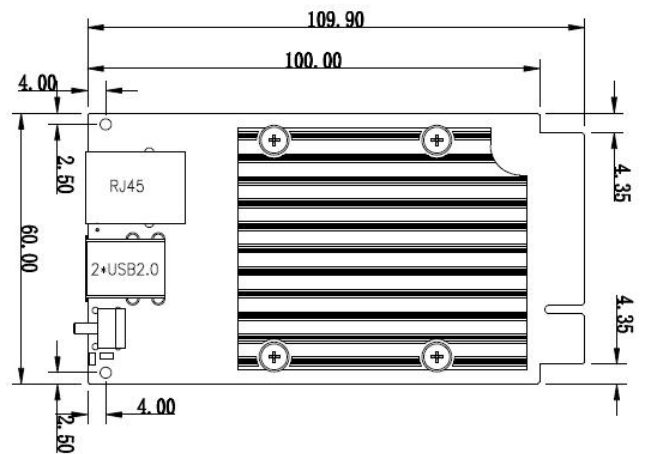
Mechanical and Environmental

Dimensions	109.9mm x 60mm
Power Requirement	SDM I/O 12V/3.3V
Operation System	Windows 8.1/10 (64 Bit)/Android/Linux
Storage Temperature	-40 ~ 75° C (-40 ~ 167° F)
Operating Temperature	0 ~ 60° C (32 ~ 140° F)
Relative Humidity	95% @ 60° C (non-condensing)

SDM I/O (PCIe x8 Edge Connector)

USB	1 x USB3.0
Display Interface	1 x HDMI1.4b (Max. 2560 x 1600 @24Hz)
	1 x DP1.1a (Max.4096 x 2304 @60Hz)
Serial Port	1 x COM

Dimensions and Drawing



Rear I/O

USB	2 x USB2.0
Ethernet	1 x RJ45

Ordering Information

SDM-Z8350	CPU: x5-Z8350, RAM: 2GB 1 x HDMI (SDM I/O), 1 x DP (SDM I/O) 1 x COM(SDM I/O), 1 x RJ45 1 x USB3.0 (SDM I/O), 2 x USB2.0 eMMC Onboard 32GB
-----------	--------------------------------------------------------------------------------------------------------------------------------------------------------